



sarasota orchid society **view**

UPCOMING MEETINGS:

**September 5—
Annual Picnic**

**October 3—
Roy Krueger
Orchids We Can All
Grow**

**November 7—
Linda Wilhelm,
Woodland Orchids,
topic TBD**

**Meetings are on the first
Monday of each month.
Doors open at 6:15 pm.
Cultural Study Group
starts promptly at 6:30 pm.
Regular meeting starts at
7:30 pm.**

**Marie Selby Botanical
Gardens, 801 South Palm
Avenue, Sarasota, Florida
www.sarasotaorchidsoci-
ety.org**

Joining us for the September SOS Picnic?

Labor Day Picnic—Monday, September 5, at 6:00 pm at the Selby Gardens Activity Center—our usual meeting place.

We will not have a formal meeting or a speaker this evening. Just a great chance to get together and get to know one another better!

We are planning to have the following:
Any members interested in bring in any extra plants that they would like to sell, please feel free to do so. We plan to have a large plant raffle—if you have extra plants that you want to contribute to the raffle, we would appreciate having them.

Our normal monthly “Show & Tell” table, so don’t forget to bring in your blooming orchids!

Our Society will provide the meat—Chicken or Ribs, also Coffee, Tea, Soft drinks, Iced Tea, paper plates, flatware, cups, and ice.

All Society members and a guest are invited to attend.

Please RSVP by email to: Judy Robertson—jerob1@verizon.net (926-1819 if no email) or Jo Davis srjkd@verizon.net to sign up (228-5501) no later than Thursday, August 25th.

SOS Members who are planning to attend are asked to please bring a dish to serve approximately 12.

MEMBERS WHOSE LAST NAME STARTS WITH:

A to H: Salad I to Q: Side dish R to Z: Desserts

Looking forward to seeing you at the picnic!!!

The SOS Board of Directors

Gongora armeniaca (Lindley) Rchb. f. Xenia Orch. 1: 52. 1854.

By R J Ferry

Known from Nicaragua, Costa Rica, and Panama, this one is definitely a “tropical!” Considering its native countries, it would be wise to not let this species see temperatures below about 8° C. (45-46° F.), and those temperatures only briefly. Actually, to do really well with gongoras, that lowest temperature limit should be closer to 15° C. (58° F.). Remember: its native countries don’t have “hot-cold” summer and winter seasons as are known in the temperate regions of both hemispheres. They tend to see a “wet-dry” cycle, but in Panama it can rain pretty much any time of the year. Particularly for

See “Gongora” on page 5

INSIDE:

Repotting seedlings.....	6
Just launched.....	8
October Hospitality Committee refreshment providers	8
August 1st winners	8
Neem oil.....	8
Fungus gnats	10
20th World Orchid Conf	12

**ORCHID VIEW is published monthly by the
Sarasota Orchid Society and is available to
members in either printed or digital format.**

**2011
September**

The Sarasota Orchid Society Inc.

(SOS) meets on the first Monday of each month at Selby Botanical Gardens, 800 South Palm Ave., Sarasota, FL. The SOS Inc., an affiliate of the American Orchid Society, is a nonprofit association with the aims of promoting the development, improvement and preservation of orchids through the dissemination of information concerning the culture, hybridization or development of orchids; and generally to extend the knowledge of orchids.

Annual dues are \$20; \$25 for family. Deadline for the newsletter is the 15th of the previous month.

Contributors to this newsletter give reprint rights of their work to newsletters and other affiliates of the American Orchid Society.

www.sarasotaorchidsociety.org

2011 Sarasota Orchid Society Board of Directors

PRESIDENT:

Monroe Kokin

941-445-4789

orchidpix@comcast.net

VICE PRESIDENT:

Dennis Pavlock

941-966-8753

denny.pavlock@hp.com

TREASURER:

Laurie Stoner

941-358-8537

laurissas@msn.com

RECORDING SECRETARY:

Jo Davis 941- 228-5501

srqjd@verizon.net

CORRESPONDING SECRETARY:

Manuel Chapote

AOS REPRESENTATIVE:

Barry Reese

MEMBERSHIP:

Carolyn Langdon

941-907-4161

lwrlangdon@gmail.com

SHOW CO-CHAIRPERSONS:

Monroe Kokin &

Jo Davis

LIBRARIAN:

Pat Quinnelly

NEWSLETTER EDITOR:

Fred Bigio

fredbigio@comcast.net

WEBMASTER:

Alan Marlor

RAFFLE HOST:

Leroy Mouton

STORAGE MANAGER:

Norm Hillstrom

DISPLAY TABLE HOSTS:

Roy Krueger

Barry Reese

AT-LARGE:

Connie Waymer

David Belle

Michael Sinn

COUNSEL TO THE SOS:

Robert M. Johnson, Esq.

One North Tuttle Avenue

Sarasota, FL 34237

941-951-0707

SUPPORT OUR VENDORS AND SUPPLIERS

AOS

561-404-2000

Art Stone Orchids

American Travel Group, Shelton Thorne,
813-282-4510 or 800-266-0755

Byrd's Orchids, Bill & Wanda Byrd

863-859-5060

Canaima Orchids, Michael Sinn

941-773-2940 (Mon-Sat 10:00 am-4:00 pm)

Chapman's Orchids, Charlie Chapman

407-619-1907

Fender's Flora Orchids, Bill & Susan

Fender, 941-412-1355 (Mon-Sat 9:00 am-2:00 pm)

Florida SunCoast Orchids, Jim Roberts

941-544-6831 (By appointment only)

Hicks Orchid Supplies, John & Lois Hicks

407-493-3064

Farm & Garden, Jeff Hibbs

941-366-4954 (Mon-Sat 9:00 am-5:00 pm)

June's Orchid Estate

813-986-1616

Krull-Smith Orchids, Jim Krull & Frank

Smith, 407-866-4134

Nature on the Rocks, Guy & Janice

386-437-6832

Odom's Orchids, John & Louise Odom

772-467-1386

Orchid Art, Joné Ritchie (Orchid Paintings)

941-922-3434 By appointment only

Orchid Art, Judy Robertson (Ceramic

Orchid Art) 941-926-1819 (By appointment only)

Palmer Orchids, Robert Palmer

941-322-1644 (Mon-Sat 9:00 am-4:00 pm)
Call for Appointment

Plantío La Orquídea, Rafael Romaro

941-504-7737 (Mon-Sat 9:00 am-5:00 pm)

The Orchid Specialist, Steve Hawkins

407-889-3138 or 321-279-3003

JOIN THE AOS

If you are not a member of the American Orchid Society, let me briefly tell you about the premier organization devoted to our hobby. The AOS is the world's largest specialty horticulture group and offers information not available elsewhere. The monthly magazine, *Orchids*, is the most highly-regarded orchid periodical in the world. The photography and articles are outstanding. Membership entitles you to a 10% discount on publications and your dues support conservation and educational programs. As a new member you will receive a copy of *Your First Orchid*, a book chock full of advice and an *Almanac* listing all affiliate organizations (Florida has the most with 58), growers, special interest groups, descriptions of awards, and many more resources. Membership forms are available at the sign-in table for anyone who needs one.

The AOS also publishes the *Awards Quarterly (Now on CD AQ Plus)*, with detailed descriptions of 200-300 awarded orchids with color photographs. I eagerly await mine every three months.

Dues are U.S. single membership \$65.00; for a 2 year membership \$125.00. American Orchid Society, 16700 AOS Lane, Delray Beach, Fl. 33446 TheAOS@aos.org; 561.404.2000

Monroe



Encyclia alata
Photo by Bob Scully

Orchids Need Help?



TIGERTM
O R C H I D
PRODUCTS & SERVICES

Over 50 Years Experience Growing & Showing Orchids

Contact Bob • 941.922.1776 • tigerorchid@verizon.net

AMERICAN GROUP
TRAVEL

3825 Henderson Blvd. • Suite 603 • Tampa, Florida 33629

www.americangrouptravels.net

Toll Free: 1-800-266-0755

americantravels@earthlink.net

813.282.4510 ★ Fax 813.288.4904

SHELTON A. THORNE

UPCOMING SHOWS

October

1-2—Florida West Coast Orchid Society Show, Minnreg Hall, 6340 126th Ave. N. Largo, FL. Contact: Brent Finke, 2961 La Concha Dr., Clearwater, FL 33762; (727) 460-4606; brent@irbhardware.com.

15-16—Gainesville Orchid Society Show, Kanapaha Botanical Gardens, Gainesville, FL. Contact: Candace Hollinger; drahcir7@bell-south.net.

21-23—*Orchtoberfest, Power Plant/EEG Orchids, 4265 Marsh Rd., Deland, FL. Contact: George Hausermann; (386) 738-8600; powergrown@aol.com.

28-30—Delray Beach Orchid Society Show, Old School Square, 51 N. Swinton Ave., Delray Beach, FL. Contact: Annette Jackson, 7283 Via Genova, Delray Beach, FL 33446; (561) 638-9014; aojax@comcast.net.



Paph Dollgoldi 'Palmeadows'

Photos this page by Bob Scully



Ctsm DonnaWise 'Palmeadows'

For members who are receiving the newsletter by mail, you are missing out on some wonderful color pictures taken during the year in our newsletter.

If you have computer access and are getting the newsletter by snail mail, you can switch and save the Society \$7.00 per year per person.

Please contact me and I'll be glad to add you to our e-mail list.

Carolyn Langdon
lwrlangdon@gmail.com

Member Advertising

Newsletter advertisements are \$120.00 per year. Checks payable to Sarasota Orchid Society may be sent to:

Laurie Stoner
5648 Country Lakes Dr.
Sarasota, FL 34243-3805

LET'S TALK ABOUT SALES
The vendors who lecture at our meetings take their valuable time and effort to educate us on orchid culture. In turn, they ask us to buy their plants which they bring to sell at our meetings.

We know that there are lots of places to buy orchids in our area but as members of SOS, we should really make a point of patronizing the speakers and advertisers when we buy new plants.

HELPING HAND ORCHID SERVICES

REPOTTING, DIVIDING, WATERING, SPRAYING
PLANTSITTING, PLANT ACQUISITION, SETUP

Leroy A. Mouton

941-592-8803

hhhs@tampabay.rr.com

www.helpinghandhomeservice.net



HELPING HAND HOME SERVICES

"Gongora" from page 1

these orchids, the "low" temperatures shouldn't be very low, with the "highs" accompanied with high humidity levels, and breezy air movement

Gongoras are generally said to flower in summer or fall, but actually their flowering cycle depends more on the wet-dry cycle afforded the plant. As the first green, pencil-like vegetative growths emerge, the plant will want to be in its "wet" season. This season continues as the large plicate leaves form and spread and the basal pseudobulbs are plump. As these growths mature, the drier climate cycle commences, the sugars within the pseudobulbs begin to coalesce, and the plant's flowering cycle is initiated.



Gongora armeniaca

Gongora armeniaca commonly flowers in June-July and November-December, but the plant presently in the author's greenhouse was in flower in November, and now has a fourth inflorescence (the first three have faded) on the way. In more than one place, it's noted in the literature that "the flowers are of exceedingly complex structure, in many cases almost impossible to describe!" Note the single flower (somewhat larger

than life-size) above (Fig. 1). The sepals and petals are held backward, well out of the way, and the labellum is above the column. The male euglossine bee, searching for fragrance with which to make himself more desirable to the female bee, has to enter upside down into the labellum, and--as he exits--the pollen is deposited on his thorax. Floral colors in *G. armeniaca* may be apricot-orange, yellow, or salmon color, and all are pleasantly fragrant. *G. armeniaca* var. *bicornuta* form differs from the typical one shown above) in that its epichile's apex has two short lateral horns, a conspicuously elongated rostellum, and rich dark red petals.

Gongoras, like stanhopeas direct their inflorescences downward, so they should be cultured in hanging baskets (exception: *S. martiana*), but gongoras--although they're close relatives of the stanhopeas--are more conventional. The inflorescence erupts upward from the base of the pseudobulb and grows outward until its weight causes it to first arch and then bear the flowers pedulously. Hence gongoras may be grown in hanging pots. As the inflorescence grows, care needs to be exercised with watering. Water (particularly cold water!) can cause premature bud drop.



Gongora armeniaca



Gongora armeniaca

Although this species hails from Panama, where the "wet season" may see some dry days and the "dry season" may see some wet ones, the plant prefers to be in a "more dry" cycle as it approaches flowering. Inflorescences of *Gongora armeniaca* tend to arch downward to about 12-25 cm. total length, but don't count on short inflorescences with other members of the genus. Plants of *G. quinquinervis* and others have been seen with pendent inflorescences of nearly a meter long! Also, while *Gongora armeniaca* is a smaller plant with shorter inflorescences, and flowers at least twice a year, *G. maculata* can become a much

larger plant with much longer inflorescences, and may well flower all year long! A well-grown *Gongora* species can make a striking display in the greenhouse. It can be packed gently and displayed at the orchid meeting or in the home, but the flowers probably will do better and last longer if the plant's enjoyed in its flowering location (Fig. 2). This is all the more reason to (a) have a good-sized greenhouse; and (b) spend time in it!

In nature, gongoras are generally found growing on trees, rock outcroppings or on steep hillsides where the inflorescence can hang. References are silent as to the composition of the type rock they prefer, but one suspects a likely substrate would be a Cretaceous limestone substrate with water draining over it, or a firm-based granite. For your editor, gongoras have grown well in all the mixes or mountstrata in/on which they've been housed. They're warm growers, have unusual-looking flowers, and are fragrant, so...take your pick!

Reprinted with permission of the McAllen International Orchid Society, McAllen, TX



Repotting Seedlings

By R J Ferry
All photos were by Wilma Ferry

When plants have been ordered from a commercial establishment, it is not uncommon to see them arrive in small plastic 2-inch square seedling pots that are all of 3 inches deep. Some may even arrive in 3-by-3-by-3 pots. Whatever the pot size, each of these plants is a seedling requiring a more tender potting protocol than would be necessary for a mature plant.

In contemplation of the annual MIOS [McAllen International Orchid Society (MIOS)] repotting and plant-sharing meeting in April, a few digital photos were taken as various seedlings were potted. Some were cattleyas and others were paphiopedilums, but the repotting regimen was about the same for all. The plants arrived, and each was wrapped in newsprint and had been carefully padded. The first step was to gently unpack each plant, take an inventory of what had arrived, and give the potted plants a light misting and allow them to stand upright for 72 hours in "reasonable" light (not overly bright, but enough to encourage leaves to resume their natural growing posture. This was the case with the group of plants below, after being unpacked and allowed to stand on the potting table under the light (Fig. 1).



Fig. 1—A group of *paph & cat* seedlings on potting table; most in 2-inch pots. Photo taken after unpacking, giving a light misting, and allowing pots to stand upright for 72 hours.

The next step was to move the plants away from the immediate area where each would be repotted, and have the necessary potting material close at hand. The potting materials included a good supply of medium-to-fine firbark, coconut fibers, fresh New Zealand Sphagnum moss, small chunks of limestone, and plenty of water. Most of the seedlings were "overpotted:" into four or six inch plastic pots. This may be a cause for criticism from some circles, but it's been this worker's experience that smaller pots tend to dry out much too fast, and these sizes also allow for plenty of room for root growth.

We begin by putting a layer of medium-sized bark in the bottom of the pot to allow for drainage (Fig. 2).



Fig. 2—Base layer of fir bark in 6-inch plastic pot.

This was overlaid with a thin layer of Sphagnum. In some cases, a thin layer of coconut fiber was substituted for the Sphagnum,

but either serves basically to act as padding over the medium bark (Fig. 3).



Fig. 3—Fir bark covered with layer of coconut fiber and sprinkled with limestone chips.

Over the sprinkling of limestone chips is laid a layer of Sphagnum and a layer of finer bark, both of which are moist. The seedling (in this case, a *paph*) is gently depotted from its seedling pot, so that any of its original mixture falls into the new pot and is readily available to the plant (Fig. 4).



Fig. 4—*Paph* seedling depotted from 2-inch pot. Caution: the seedling and its roots are fragile!

In this photo (Fig. 5) it's obvious the first concern for a newly potted seedling is to grow roots! Part of this culture is to ensure the present roots receive minimal damage during repotting of the seedling!

Once fully depotted, the



Fig. 5—*Paph* seedling depotted from 2-inch pot. Note the seedling's sparse hirsute roots.

seedling is held in position, it's roots are teased into comfortable positions within the pot, and the moist media is eased around the roots (Fig. 6). This is a mix-



Fig. 6—Roots spread and plant held vertically, the potting mix is gently firmed around plant.

ture of a finer-grade bark mixed with some Sphagnum and the potting mix in which the seedling arrived. Nothing is wasted! During this phase, the plant is held firmly but gently in the proper position.

As the potting mix is firmed around the plant, care is taken to keep the plant centered and firm the mix around the inside rim of the pot; not putting great



Fig. 7—While holding seedling in place, the potting mix is packed around plant.

pressure on the plant itself (Fig. 7). Speed is not essential; attention to detail is!

The plant is now



Fig. 8—With *paph* seedling holding in place, more potting mix is added.

holding in place, but close inspection shows it's still a bit wobbly and could be stressed by overly strong air movement. A little more potting mix is added and gently firmed into the pot around the plant (Fig. 8).

With the additional potting mix added, another light sprinkle of crushed limestone chips is added. The well water used to water plants in the greenhouse is slightly alkaline, and these will add to the acidity of the substrate (Fig. 9).



Fig. 9—With paph seedling holding in place, another sprinkle of limestone chips is added.

We're now into the "finishing touches." A thin layer of Sphagnum moss is laid over the limestone chips (Fig. 10).



Fig. 10. The limestone chips are covered by a thin layer of Sphagnum moss.

Over this thin layer of Sphagnum, still another lay-



Fig. 11. Over the Sphagnum moss, a final cover layer of the potting mix is added.

er of potting mix is added, and the plant is checked for cleanliness and general appearance (Fig. 11).

With the addition of the final layer of potting mix, the plant is gently sprinkled to remove any stray potting mix parts from leaves and it is now all-but-ready to be benched in the greenhouse or other appropriate place to receive early morning sunlight, but not the harsh light of mid-day or later (Fig. 12).



Fig. 12. The newly potted plant is now all-but-ready to be benched.

Don't be so hasty! We're not finished! It's important to add the plant tags! It's one thing to have a shipment of plants come in and be repotted, but it's also important to include each plant's tag in the pot! You may think you know what you have, but after potting several plants, the seedlings can easily look all the same! As each plantlet is finished being potted, make certain you have the plant's tag close by so it can be gently slid inside the pot. Look again at Fig. 12, and look closely at the plant tag lying on the potting table on the right side of the potting tray in the figure. Don't get in a rush and neglect to properly tag each plant.

Had this been a plant for [the writer's] collection, the plant tag would

also carry a plant number. Its plant number would have been the date (day-month-year) the plant was received, followed by 1, 2, or 3, and so forth for each subsequent plant received on that date. Note that the date is expressed as day-month-year, not the month first, so the first plant received on--say--15 January, 2011 would be PI#150111-1, the second plant would be PI#150111-2, and so forth. This matter of plant numbering may seem like a very minor thing, but over the past forty and more years, it has turned out to be not only a very useful system, but one that has helped to re-identify plants that would have otherwise been hopeless cases where plant divisions have been shared and much data lost. Be meticulous, and consistent, pay attention to the small details, and keep records of your plants and how you care for them. Over the long haul, it will make a great difference in how much you can learn and how much learning you will be able to retain! Taking the time to keep good plant records is a great way to combat forgetting. In addition, as time passes, your records of years ago can bring back some pleasant memories of people, plants, places and events. Trust your journal editor on this one: it's worth it!

The previous page has outlined a little of the potting of a shipment of several orchid seedlings that arrived in early January, 2011. As this is written in late



Fig. 13. Seedling plants potted on 27 January, 2011.

March, the seedlings have not only survived, [but] all are healthy (Fig. 13).

There is yet another aspect to repotting seedling orchids. Don't expect your newly potted plants to burst into flower almost instantly! The Phragmipedium lindleyanum, seen among other young orchid plants (Fig. 14), is one that entered the collection as a seedling on 02 August, 2009. Your editor's plant records indicate: "the space between the plant pot and outer pot is padded with Sphagnum. The potting mix is bark & Sphagnum laced with limestone."

Several months have passed between the hot days of last August, including the winter season with its freezing temperatures of early February, 2011. Now, as April is nearly here, the plant is putting out its first flowers. One important point to remember: when you repot seedlings, have the patience to be an orchid plant grower, not merely one who buys a plant for "instant flowers!"

Copyright © 2011 R J Ferry

Reprinted with permission of the McAllen International Orchid Society, McAllen, TX

Just launched!

Our next film, *Wild Orchid Man In The Mountains Of Amazonas* has been approved as a Kickstarter project. This is a fund-raising site for projects they deem worthwhile. It is a way for anyone, no matter the support level, to participate in bringing this film to completion.

Of course, donations to the Sarasota Orchid Society (<http://www.sarasotaorchidsociety.org/>) for the Wild Orchid Man series are still acceptable and may carry a tax benefit.

Check out the link. Let me know if you have any questions and please pass it on to anyone you think might be interested! You can view a 5 minute excerpt from the new film.

<http://www.kickstarter.com/projects/1261401241/wild-orchid-man-in-the-mountains-of-amazonas>

Thanks!
 Darryl Saffer
 Studio Ray Productions
 3101 West Place
 Sarasota, FL 34234



REMINDER October 3 Hospitality Committee

We are asking those listed below to please take their turn for this month to help. It involves bringing light refreshments and or beverages, help set up buffet table, and share in the clean-up process after the meeting. Doors open at 6:15 and all food and set-up must be finished by 7:15, before the meeting starts at 7:30.

Your help will be greatly appreciated:

- Jean KennarLight refreshment
- Monroe Kokin 1 gallon Iced Tea
- Mecky Kressle Light refreshment
- Al & C. LangdonLight refreshment
- Esther LeeLight refreshment
- Roy Krueger 3 one liter soft drinks (coke, sprite, diet coke, or your choice)
- Leone LevyLarge Bag of ice
- Cathy Lewis . . .Light refreshment
- June LongLight refreshment
- Alan Marlor. 3 one liter soft drinks (coke, sprite, diet coke, or your choice)

Light refreshments: Desserts, Cookies, Cheese & Crackers, Fruits and or Nuts.

If you cannot make this meeting, please call or email me as soon as possible, or switch with another member.

Thanks so much!
 Judy Robertson
 Hospitality Chair

Winners from Monday August 1st meeting



Novice AND Speaker's Choice: **BLC Memoria Vide Lee**, owner Patty Quinnley



Member's Choice: **Psychopsis Mendenhall (Monarch)**, owner Cathy Lewis



Species of the Month: **Myrmecophila Brysiana**, owner Barry Reese

Neem Oil

By Susan Jones

The Neem Tree (*Azadirachta indica*) also known as indian lilac or margosa) probably originated in India or Burma. Neem is a large, fast-growing evergreen that can reach approximately 40 to 80 feet (12 to 24 m) in height. The tree is drought resistant and heat tolerant, and may live up to 200 years. It grows in many Asian countries, as well as tropical areas of the western hemisphere. Neem oil, which is extracted from the tree's seeds, has been used for its medicinal and insecticidal properties for more than 4,000 years.



The Neem Tree has been used for its medicinal and insecticidal properties since antiquity.

Applications for Humans
 Since ancient times, man has utilized neem products for their pest-repellent properties. Neem has been shown to ward off sand flies and mosquitoes, aiding in control of the spread of diseases such as malaria. Neem oil has been used to treat lice and scabies, and tea brewed from the leaf of the tree employed as a termite control. Neem leaves placed in the pockets of woolen clothing

are said to fend off moths; added to stored grains and beans, they help keep insects out. Neem products are included in some dog soaps and shampoos to repel fleas and ticks, and used as a cattle-feed supplement to kill parasites. The application of neem derivatives to bags and stored grains provides safe and relatively inexpensive protection against insect pests, fungus and even rats, reducing post-harvest losses in developing countries.

Medicinal Uses

Neem is considered harmless to humans, animals, birds, beneficial insects and earthworms, and has been approved by the US Environmental Protection Agency for use on food crops. Azadirachtin and other active ingredients in the neem seed have insecticidal properties that are effective against a broad spectrum of insects, many mites and nematodes, and even snails and fungi, and do not seem to generate resistance in the pests they affect.

Neem products do not provide absolute insect control, but frequent applications can reduce pest populations dramatically by repelling them; inhibiting their larval development, growth, fertility, mating and egg laying, and deterring feeding. A solution of neem oil smothers insect pests and has antifungal properties as well — the oil coats the plant's surface and prevents the germination of fungal spores. Neem oil can also be used as a safe, natural leaf polish.

A recipe for a neem-oil foliar-spray solution suggested by growers is as follows:

Mix 1 teaspoon (5 ml) of neem oil and ½ teaspoon (2.5 ml) of a gentle, plant-safe liquid dish soap (as a spreader and sticker for the oil) to 1 quart (.9 l) of warm water, or 4 teaspoons (20 ml) of neem oil and 2 teaspoons (10 ml) of liquid dish soap to 1 gallon (3.8 l) of water. A 50:50 solution of isopropyl alcohol and warm water can be substituted for plain water.

Shake the solution intermittently during application to keep the ingredients well mixed. Because the oil smothers insect pests, be sure to completely cover all plant surfaces for maximum effectiveness. Some sources indicate that the mixture begins to break down after eight hours, so a fresh batch should be used at every application. The insect-controlling properties of neem lose effectiveness over time, especially in warmer temperatures, and may be washed off during watering or by rainfall, so repeat sprayings at weekly to biweekly intervals are needed to control successive generations of pests. In addition, it is useful to keep up manual removal of bugs as part of the control regime.

Precautions

Oil solutions should never be applied to plants during hot weather (85° F [29° C] or warmer) or in direct sunlight. To prevent burning of tissues, treated plants should be shaded until the

application is dry. Another consideration is avoiding strong or excessive amounts of detergent or use of ammonia-based cleaners, as these may damage your plants, especially sensitive parts like buds and flowers. This is particularly true of soaps that could remove natural protective waxes from plant tissues. One source suggests that the flowers of some orchids, such as *Miltonia* and *Masdevallia* species, may be sensitive to neem oil. Horticultural oils, including neem, can also affect bees if it contacts them — once the spray has settled it is no longer harmful.

Other Considerations

Most growers like to see insect pests drop dead right away. Although pesticides usually provide that instant gratification, their use contributes to the buildup of toxins in the environment, can affect beneficial insects and generate populations of pests resistant to their effects. In addition, these chemicals are responsible for the accidental poisoning of humans, pets, livestock and wildlife populations. As an option for ecologically friendly pest management, neem is nontoxic to humans, animals and beneficial insects. It is biodegradable, does not build up resistance in pests and is relatively inexpensive. For safety and health reasons alone, controls such as this may be the only option for indoor growers or those whose collections reside in or very close to their living area.

REFERENCES

- Dreyer, M. and Echo Staff, 1984. *Neem: Use as Insecticide*. Tropical-Seeds.Com: Cultivation Techniques: Articles. Institut fur Phytopathologie und Angewandte Zoologie, Justus-Liebig Universitat, Germany. (http://www.tropical-seeds.com/tech_forum/growing-tech/neem_insecticide.html).
- Mp-Golden Harvest Organics LLC, 2004. *How safe is it?* (<http://www.ghorganics.com/NeemOil.html>).
- Johnson, Paul J. *Mealybugs on Orchids*. Insect Research Collection, South Dakota State University. (http://nat_hist.sdstate.edu/orchids/pests/mealybugs.htm).
- Lilot, Loetitia S., 2000. *The Neem Tree: The Village Pharmacy*. Southern Illinois University Carbondale/Ethnobotanical Leaflets. (<http://www.siu.edu/~ebl/leaflets/neem.htm>).
- The Neem Foundation, 1997. *Neem for Eco-Friendly Pest Management*. (<http://www.neemfoundation.org/pest.htm>).

Susan Jones was the editor of Awards Quarterly and assistant editor of Orchids. American Orchid Society, 16700 AOS Lane, Delray Beach, Florida 33446

Reprinted from the JUNE 2004 issue of Orchids — The Bulletin of the American Orchid Society. Copyright American Orchid Society — www.aos.org

Fungus Gnats*

By Paul J. Johnson
 Insect Research Collection,
 South Dakota State University,
 Brookings, SD



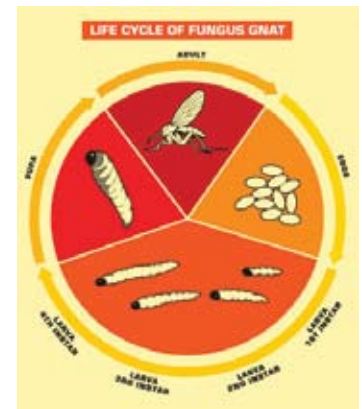
Orchid growers are reputed to pamper their plants excessively. However, over-watering and over-fertilizing are two symptoms of a “mothering” of plants that can be deadly. Most natural species orchids are adapted to harsh and low nutrient conditions, with roots in well drained media, if covered at all. Given this the use of potting media is used not for nutrition as with most plants but to help provide moisture in the artificial environments of the home, office, or greenhouse, as well as temporary support while roots are growing. Media breakdown through time is related to watering and fertilizing, and is a significant problem for the majority of cultivated orchids. The

more decayed the media then the less breathable it is for the orchid’s roots. Interestingly, there is an insect that can be used as an indicator of poor orchid care, even though they are commonly considered pests. Probably all orchid growers have at least some of this insect in their plant collection, namely, fungus gnats. Fortunately, for orchid growers, these little flies are usually mere nuisances, only.

Biology

The common fungus gnats in the hobby orchid collection are small (ca. 1.5-3.0 mm), long-legged, long-antennaed, delicate flies with dark bodies and one pair of dusky-grey to black wings. Insect taxonomists place these small flies into the family Sciaridae (pronounced: “sy-are-ee-day”), with the common name “dark-winged fungus gnats.” This taxonomy helps discriminates them from a wide diversity of related gnats that feed on fungi. [Gnats are simply small flies, most of which do not bite!] As with most other insects with four life stages (i.e., egg, larva, pupa, adult), it is the larva or maggot that does most of the feeding. Adult fungus gnats do not bite and are absolutely harmless to people and pets. Fungus gnats are widespread and very common insects.

Adult dark-winged fungus gnats fly in search of fungi. The females lay their tiny white eggs in moist to wet



soil. When the eggs hatch, the slender translucent-white maggot with a distinctive shiny black head feeds on fungal growths and measures about 4-5 mm in length when mature. After about 2 weeks, depending on temperature and moisture, the maggot transforms into the pupal stage, then emerges a few days later as an adult fly. The entire life cycle takes about a month. As the name indicates these flies are associated with fungi. But, why are they so common around potted plants? Well, it is not because they are feeding on your plants, usually! They are common because their larvae are feeding on the fungi growing in potting media that is too moist or wet, is warm, and in media that is decaying quickly. In other words, it is the over-watering and over-fertilizing of your plants that brings out the best in these cute little flies. Fungus gnats are more abundant in older and moister potting media that is rich with fungi. Organic potting materials will decay faster with higher levels of fertilizers because nitrogen also feeds the fungi and other decay

organisms.

Usually, the maggot feeds only on fungal growths. However, larvae will also feed on seedlings, dying and rotting tissues such as roots, and will rapidly devour a leaf resting on the surface of moist potting media. Feeding on roots of seedling orchids has been observed, possibly due to a combination of sterilized media, high moisture, stressed plants, and lack of fungi for the maggots.

Detection

Adult fungus gnats are usually the first life stage to be seen of these insects. The adults are active on the surface of the potting media, often running along the edge of the pot. They fly readily and are often found at windows. Yellow sticky cards, the kind used for whiteflies and aphids, are excellent for monitoring adult fungus gnats. Check for larvae by watching for declining plants, then or otherwise unpotting the plant and examining the media for white to translucent, slender bodied, black headed maggots. These will usually be clustered around decaying

roots and rhizomes, and fungus clumps of media.

Management and Control

Fortunately, fungus gnats are usually easily managed and can be kept in check in most orchid collections. Yellow sticky cards sold for monitoring and control of aphids and whiteflies are excellent for trapping fungus gnats. These cards are so effective when there are only a few flies that there is no need to use any insecticide on these flies. However, often female gnats will fly little so sometimes it is useful to cut strips of the cards and insert these strips into a pot to capture more of the females. Larvae are easily controlled by adjusting watering and ensuring that your orchid media is not overly decomposed and is draining well. This may require frequent repotting if you use a heavy watering regime.

The following points will help control fungus gnats:

1. Repot your plants on a regular basis and use mixes containing materials such as charcoal and coconut (fibre or chunks) that are slow to decay, or inorganic components such as perlite;
2. Do not keep the media constantly wet and if possible allow the media to dry between waterings, especially the upper inch or so of media; and
3. Keep fertilizer to the

minimum needed for the plant and adjusted to the potting media used.

Should these cultural methods not be effective or the collection be large, then alternative treatments may be warranted. However, the use of insecticidal drenches for controlling the maggots is not recommended, except as an absolutely last resort. Severe infestations of large collections may be best treated with biological control methods. The use of bacteria, nematodes, and predatory mites is highly effective in greenhouses and may work in large collections.

Bacterial treatment is most effective against the young larvae early in the cropping cycle and uses *Bacillus thuringiensis israelensis* is sold under the trade name of Gnatrol™ for greenhouse use. This type of B.t. affects only true flies (Order: Diptera) and is different from the B.t. used for caterpillars in the garden. The B.t. causes paralysis of the maggots gut, stopping feeding and killing the maggot. Gnatrol™ is applied as a soil drench to thoroughly wet the soil of pots, flats, beneath benches, or other sites of infestation. It is only effective for about 48 hours so 2-3 applications may be needed with heavy infestations. Use of Gnatrol™ is not recommended with simultaneous use of fertilizers or fungicides containing copper or chlorine. It will not affect the

adult fungus gnats.

Parasitic nematodes are also useful for controlling fungus gnats. They enter the insect's body and multiply inside the host insect. While feeding they release a bacterium that is toxic to the host. The nematodes complete their life cycle within a few days so large numbers of infective stage nematodes are produced that will continue to search for new hosts. These beneficial nematodes can be applied as a drench to the growing media and to soil under the benches. Two common species available for greenhouse use are *Steinernema carpocapsae*, sold as ScanMask™, and *Steinernema feltiae*, sold as Nemasys™.



Finally, a small predatory mite, *Hypoaspis miles* also attacks fungus gnat larvae. These mites are usually sprinkled over or mixed into the potting media before planting. This mite is long-lived, will usually persist as a scavenger on dead insects while

continuing to seek fungus gnat maggots, and will also feed on thrips pupae and other pests.

Chemical control of fungus gnats is diverse, but always a temporary remedy. Adults may be eliminated with any insecticide spray for flying insects, though this is decidedly a temporary fix and will not affect those adults emerging after the spray has settled. Good control of fungus gnats requires removal of the larvae, hence the high value of environmental management, i.e. adjusting water schedules and repotting. Chemical control of larvae is best done with drenches of carbaryl, permethrin, imadichlopid, diazinon, malathion, and other common pesticides, and even isopropyl alcohol. However, and again, these are only temporary solutions as the flies will reinvade the pots once the chemical residue is degraded and the potting media remains wet and decaying.

**Slightly modified from the December 2000 issue of the Newsletter of the South Dakota Orchid Society.*

JOHNSON, BROWNING & CLAYTON

ROBERT M. JOHNSON, ESQUIRE

*Estate Planning and Probate
Wills and Trusts
Real Estate and Commercial Transactions*

One North Tuttle Avenue • Sarasota, FL 34237-6327
Phone 941-951-0707 • Fax 941-951-7702
Email: johnson@jbc-law.com
AV®Rated --- Martindale-Hubbell

Twentieth World Orchid Conference—Singapore

by Robert M Scully

With 20WOC's dates (November 13-20) fast approaching, activity by Conference organizers and their Committees has become more intense these days. Of course, the Show (on 120,000 sq. ft. area) is primary for most attendees, though Conference programs provide a special allure for many participants too; there is so much to learn in all of it. But the complexity of managing both ...the academic conference sessions and the beautiful orchid show (staging & exhibition)... provide an enormous challenge even for the best of teams, comprised mostly of volunteers; the devil is in the details...as we know from managing our local shows. With 20WOC hosted by a country so strategically located at the epicenter of orchid commerce, Asia, participants will be streaming into the island state from all around the nearby producing countries... to include people from both commercial and hobby sectors. There will be plenty of surprises!!

And just imagine the Show's orchid marketplace as an equally attractive element of this triennial event; everyone will be visiting the sales booths (70+), at least to get a sense of what is available in different parts of the world, as represented by sellers from 21 countries around the globe. For those who actually buy plants, 20WOC will of course, provide special facilities to all who need official export

documents to accompany their purchases to be taken "home" with them; serious overseas buyers will have to act early to gather their treasures to be inspected before they are exported from Singapore. For certain, there will be a frenzied atmosphere for many planning a "big spend."

Conference activities will be available to Registrants every day. Other local or even visitors from afar can attend activities by daily admission; tickets are already on sale. Tickets for the Show will sell at about \$12.50 weekdays and \$16.50 on the weekend; organizers expect some 300,000 visitors. For more detailed information, see: <http://www.20woc.com.sg/site/> <<http://www.20woc.com.sg/site/>>

As a special treat for registrants, access to the phenomenal Gardens by the Bay complex, already well along in its development, will be given to those interested. This exemplary 200+ acre garden, built on "borrowed" sea bottom, already includes two huge conservatories, currently being planted with orchid-inhabited tropical & montane forests. We have much to look forward to as early visitors to these "super-green" facilities. See more information and photos at: <http://www.gardensbythebay.org.sg/> <<http://www.gardensbythebay.org.sg/>>

Several Sarasota area orchid growers are planning to attend the 20WOC...so our Society should expect to have a vicarious experience

when those lucky travelers return to share their digital photos and stories too. In the end, 20WOC should turn out

to be exciting for all of us!

6590 Wild Orchid Lane,
Sarasota, FL 34241

Upper photos showing the construction underway for the 20th WOC and the bottom photo a previous WOC

Photos courtesy of Bob Scully



August 2011 Minutes of SOS:

Vice President Pavlock called the meeting to order at 7:30 PM. Carolyn Langdon introduced one new member Suzanne Semago and her guest.

Minutes of the June 2011 meeting found in the newsletter were approved on a motion and a second and approved by vote of the membership present. The treasurer's reports were posted on a cover letter for members receiving their newsletter by email and as an insert for those members receiving it by mail. A motion was made to approve, seconded, and approved by vote of the membership present.

The 55th Annual Show will be held on January 7 & 8 2012 in the Sarasota Municipal Auditorium. Set up to be on the Friday 6th.

This will be a two-day show with AOS Judging on the Saturday morning, January 7th from 8 am to 11am. The Show & Sale will be open to the public on Saturday 11 am to 5 pm and on Sunday from 9 am to 5 pm. The theme of the show will be "Orchids by the Sea." It's that time of the year that Jo & Monroe start asking for help. It may seem to be early but it never is. There is no job too small, and we need everyone to help make our Show a success. Jo reviewed all the major roles for the volunteers and passed the volunteer book around for

people to sign up.

Connie Waymor and David Belle have volunteered to do the show dinner the Saturday of the show. Neither Connie or David were present at the meeting for further details. Jo described the evening and mentioned this has always been a great time to meet your fellow workers and enjoy a great evening. Dennis mentioned there will be more information to follow in the coming months.

Carol Drost has graciously offered to assist Carolyn with some of the responsibilities of the SOS Public Relations/ Advertising job this year. Since Carol is employed at the *Herald-Tribune*, she has been proactive with contacting *Style Magazine* and our new advertising representative. If anyone would be willing to assist with filling out forms and being pro-active on-line with the various Social Networking internet sites to publicize our "SOS Dec 5th Orchid Auction" and our "January Orchid Show and Sale", Carolyn would be most appreciative.

As a reminder: our September meeting is the SOS Annual Picnic!

A friend of Leroy Mouton's, Alvin Schmidt, will cook & deliver enough BBQ chicken and pork ribs, paid for by the Society. Like last year, members will have a choice of ribs or chicken.

As mentioned in the August newsletter—Members are asked to please bring a dish to serve approximately 12. If your last name starts with:

A to H - Salad

I - Q - Side dish

R-Z – Desserts

Dennis took a quick survey of how many members go on-line to read the newsletter and/or use the SOS website as a reference site—nearly all of the members present at the meeting raised their hand. The reason he asked is—he'd like a couple of volunteers to work with me [Jo Davis] to either add content to the website or improve the content that is already available. Please see Dennis Pavlock at the break to offer to help out. No previous web content is needed. We'll teach you what you need to know, and you can work at your own pace.

The library is open during the meeting for members to sign out books for the month. See Patti Quinnelly for help if needed.

Leroy and Alan sold raffle tickets in the back.

Vice-President Pavlock announced before the break, that he wanted to remind everyone to review our Members' blooming Orchids on the Show & Tell Table and vote for your favorite hybrid, species, and novice plant. The ballots and pencils are to the right of the Novice area.

Please purchase your raffle tickets and chat with Alan Koch, our speaker tonight, from "Gold Country Orchids." Check out the wonderful orchids Alan has for sale from his Lincoln, California greenhouses—in the northern region of the state.

For over 30 years "Gold Country Orchids" have been known for their quality miniature and compact Cattleyas but to the orchid aficionado

they have also been known as a fantastic source for species. With over 2,000 different species, they have long been a source to the orchid industry. The quality of their species has been perfected through years of breeding. Alan Koch is an internationally known speaker, author, and expert in the Cattleya Alliance.

Leroy and Al did the raffle and Roy did the plant table. The meeting was adjourned at 9:30.

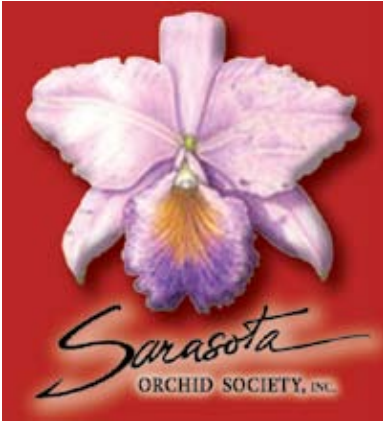
Respectfully submitted,
Jo Davis,
Recording Secretary



Catyclia El Hatillo 'Pinta'
HCC-AOS



C. violacea
Photos above by Bob Scully



**P.O. Box 19895
Sarasota, FL 34276-2895**

www.sarasotaorchidsociety.org

The monthly Hospitality Committee will provide the following at our monthly meetings:

Cheese, Crackers, Fruit, Hot Coffee, and fixings Iced tea (sweet and unsweetened), Water

Any additions to the table will be greatly appreciated.

Contributions can be made at the table.

**Hospitality:
Judy Robertson
941-926-1819**

PLEASE BRING FOOD

Top That
Concrete Texturing & Design

(941) 234-2122
www.topthatconcrete.com

Lic# CBC1280542 Nick Sollogub, Owner

Making Concrete Beautiful Inside & Out!

- ◆ Driveway / Walkway
- ◆ Pool Deck
- ◆ Patio & Lanai
- ◆ Garage
- ◆ Kitchen / Bath
- ◆ Entryway

DECORATIVE CONCRETE SPECIALISTS

Mention this ad for
***10% OFF !!**

*OFFER EXcludes 110004